

# BEARDEN HIGH SCHOOL MARCHING BAND UNIFORMS



**How to Dress for  
Success!!!!**

s is the goal



Now Let's Find Out How to Get Here

## Before getting started, make sure you know the “Dont’s” while in full uniform:

m

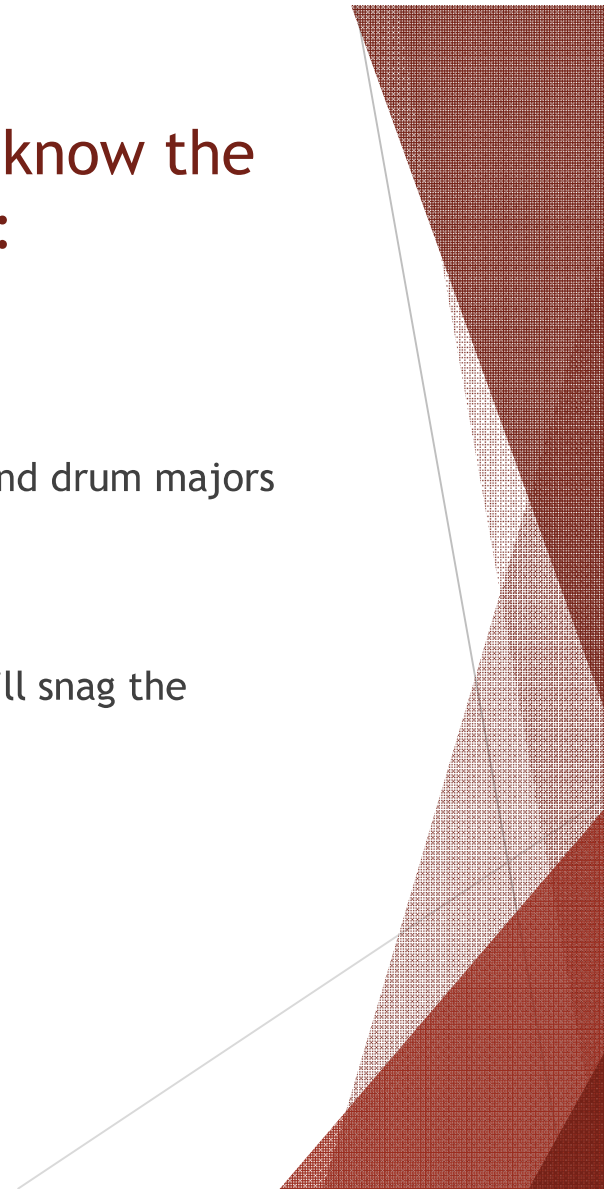
keup - the ONLY exceptions are color guard, majorettes and drum majors

arrings

ating or Drinking (Other Than Water)

ating, Climbing or Standing Against Rough Surfaces - this will snag the  
m material

uching the Plumes



## For the “Do’s”



Have Long SOLID Black Dress Socks (not navy blue)

Have Black Marching Shoes - clean and in good condition - write your name in them

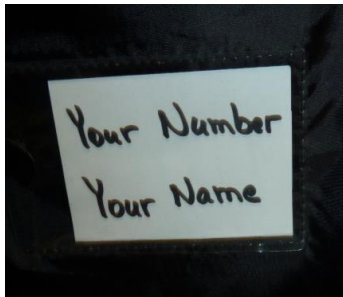
Have White Gloves (if your section wears these, they will be kept with your uniform or hat)

Have Items To Put Up Long Hair - bobbi pins, hair ties, clips (not shiny)

Have Compression Gear - white short sleeved shirt, shorts (long versions for colder weather)

Keep Track of Your Uniform Pieces - each piece is assigned to a specific band member

# 's Begin



Get your garment bag from the cabinet  
Your name and number will be on the front  
Please double check that you have YOUR uniform

Each student needs to get their own uniform - do not ask someone else to grab yours"

Remove bibbers off hanger

Remove shoes OFF and black socks on, put on bibbers

The zipper goes in front

Remember!!! There are snaps on the inside of your pants legs

(see picture below)

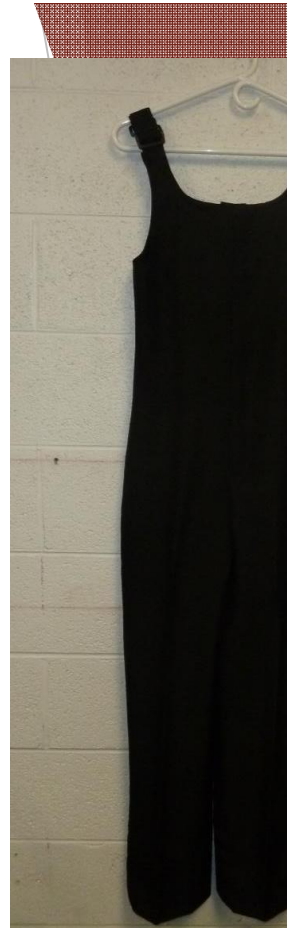
Make sure to point toes so that you don't catch the snaps

When you put each foot in the pants leg

the snap does come undone, see one of the uniform moms to get it fixed



*Note: There are 2 small pockets inside the bibbers on either side of the zipper to store small items such as cell phone or money*



our jacket

r will go in the back so you will need a “buddy” to help you zip it up

sure the shoulder pads are laying flat over your shoulders

s time you can put the clothes you changed out of into your empty  
ent bag

o the bag and hang it back in your assigned spot in the cabinet

**E: Tubas and front ensemble - Your  
tlets will be in the zipper pouch on the  
of your garment bag. Tubas -this is  
where your beret and gloves will be.  
will not need to go to the hat shelves  
nt ensemble will wear hat during  
des)**



# ur Hat Box



If you wear a shako (or hat) - head to the hat shelves

Find your box with your name and number on it and take it off the shelf

Your gauntlets and gloves (except percussion) should be in your hat box

Put on your gloves

Drummers - your beret, gauntlet and gloves will be in your garment bag (zipper pocket on back)

Note: Front Ensemble members will wear shakos and gloves for parades only



# gauntlets



Remove your gauntlets out of your hat box

Important: the white gauntlet goes on the white sleeve (right) and the light grey goes on the left

Line up the point on the gauntlet with your elbow

Starting at the wrist, fasten the Velcro up the gauntlet

Your jacket sleeve should be held in place by the gauntlet. The sleeve should barely be showing at the wrist.

To check that you have the gauntlet rotated properly, hold your arms up straight in front of you with palms facing down. The silver buttons on the outside of the gauntlet should be facing straight outward toward “the wall”

Please see a uniform mom if you have difficulty with your gauntlets



## Shako (hat)



Before putting on shako, make sure any long hair is secure on top of head to  
t up inside. Any loose hair needs to be held in place by bobbi pins or hair  
clips)

Handle the shako by the back or sides if you are not wearing white gloves. If  
you touch the shiny silver parts of the shako without gloves on - you will leave  
fingerprints

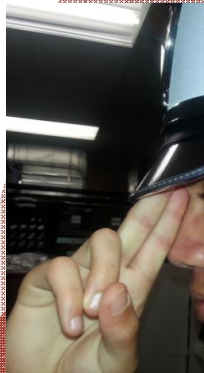
Rotate the strap forward so that it is just under the bill of the hat

Put the shako on and pull strap down under your chin

The hat should be straight on your head so that the top of the hat is flat and  
not tipped.

Do the “2 fingers on the bridge of your nose” test - see picture

Put your hat box back on the shelf in the correct spot



# e Plume

Make sure your shoes are tied and the excess shoe laces are tucked down into the  
of your shoes - you will not get your plume until your laces are tucked in  
in one of the two lines where a uniform helper will put your plume in your

When the plume is in, quickly move to the side where another assistant will  
insert your hat bill

The process needs to move quickly so make sure to move to the side and out of  
the way as soon as you are done

Be very careful not to bend over with the plume in - you could bump and bend it

Make sure to squat down when going through doorways!!

DO NOT touch your plume. The only people that should handle the plumes are  
uniform moms and their helpers.



You Look Amazing!!!  
Have a Fantastic Performance!



# How to Put Your Uniform Away Properly

At the end of two lines and have an official “deplumer” remove your uniform. Remember to keep this line moving and move to the side as you are done.

Remove hat box from the shelf.

Remove your gauntlets first.

Place the gauntlet “sandwich” (see picture) - place the gauntlets with the buttons on the inside of the sandwich but turned so they are facing out.

Place your small items to the location you retrieved them from when you were issued - gloves, gauntlets, berets.

Place the hat box to hat box.

Place the hat box “upside down” in hat box. Flat surface should be on the bottom of the box.

Place the hat box to correct location on shelf.



Get your garment bag

Take out any items you stored inside

Have a “buddy” unzip your jacket

Remove shoes

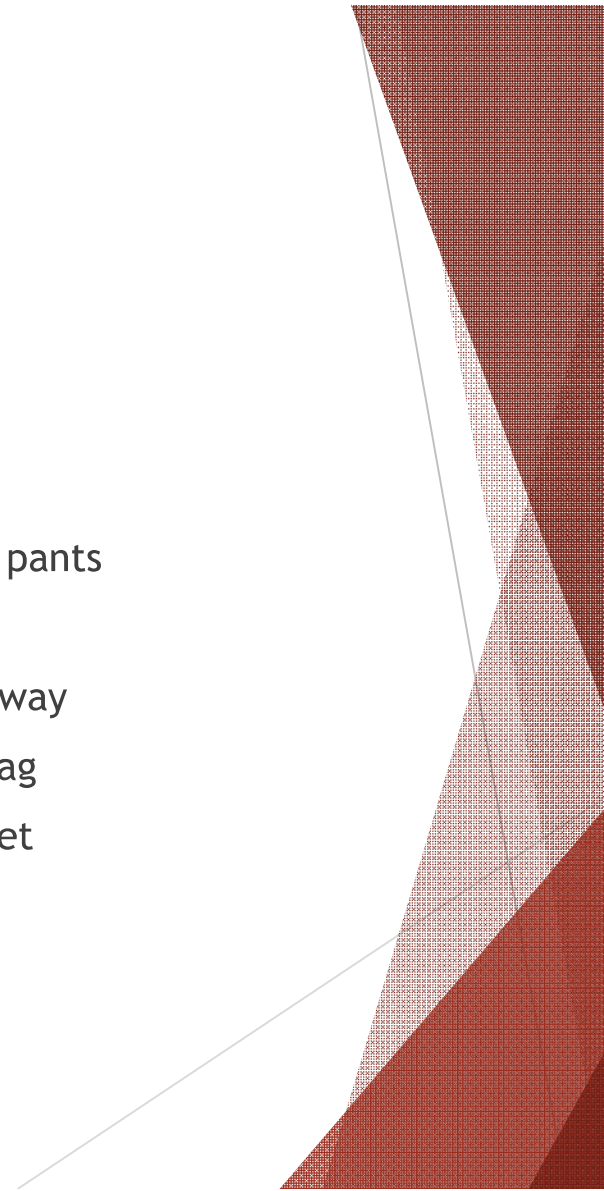
Remove bibbers - line up seams and fold like a pair of dress pants

Hang bibbers flat on hanger so it won't get wrinkled

Put jacket over bibbers on hanger and zip up jacket all the way

Place the hanger with bibbers and jacket in your garment bag

Return the garment bag to the correct location in the cabinet



If you need ANY help - Ask us!!  
We are here to help you look your best!



Ms. Cline

Ms. Arwood